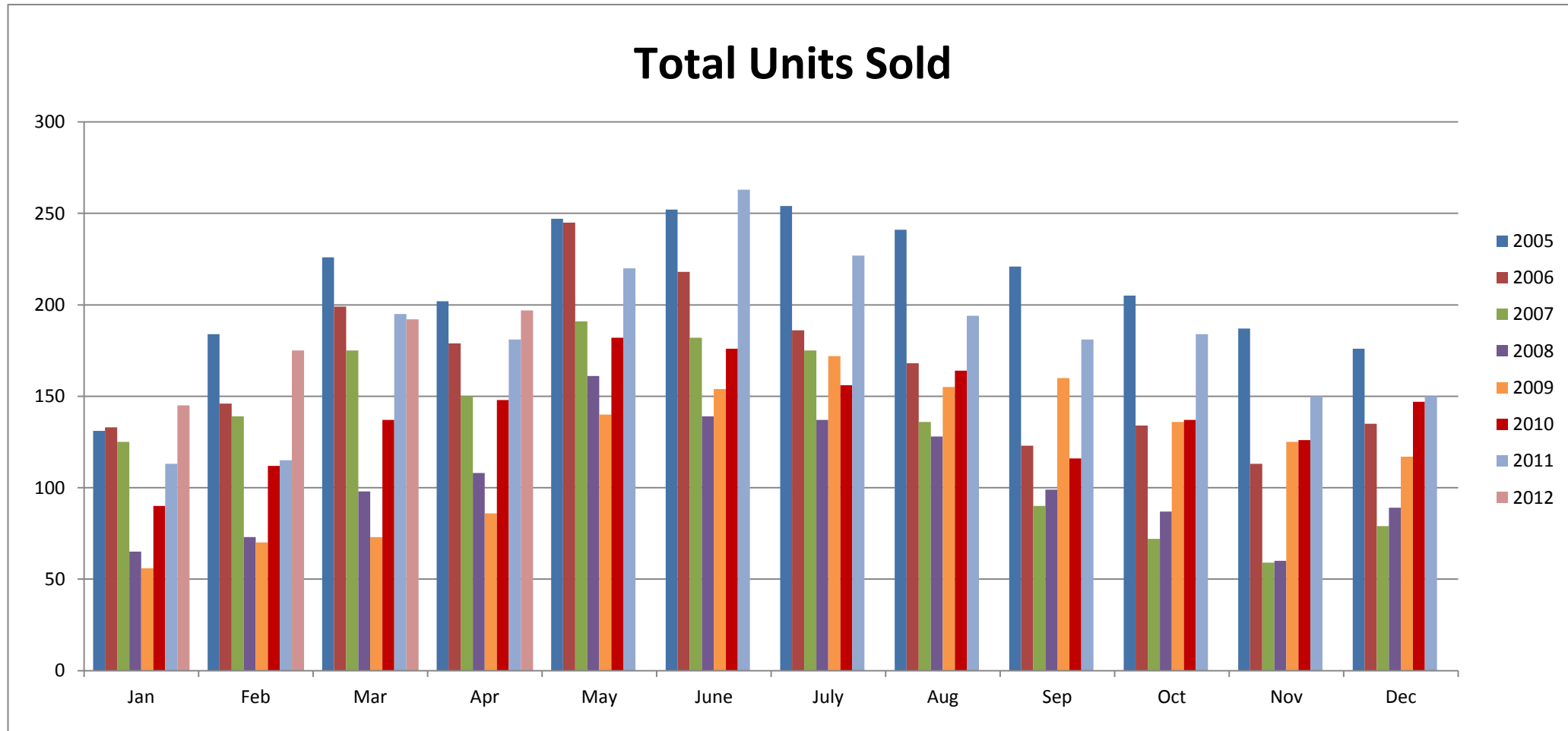


Tempe, Arizona Residential Sales Statistics

January 2005 - Present



Total Units Sold

	Jan	Feb	Mar	Apr	May	June	July	Aug	Sep	Oct	Nov	Dec	Annual Totals
2005	131	184	226	202	247	252	254	241	221	205	187	176	2,526
2006	133	146	199	179	245	218	186	168	123	134	113	135	1,979
2007	125	139	175	150	191	182	175	136	90	72	59	79	1,573
2008	65	73	98	108	161	139	137	128	99	87	60	89	1,244
2009	56	70	73	86	140	154	172	155	160	136	125	117	1,444
2010	90	112	137	148	182	176	156	164	116	137	126	147	1,691
2011	113	115	195	181	220	263	227	194	181	184	150	150	2,173
2012	145	175	192	197									709

Check out our Tempe website to Search for Tempe Foreclosed Homes:

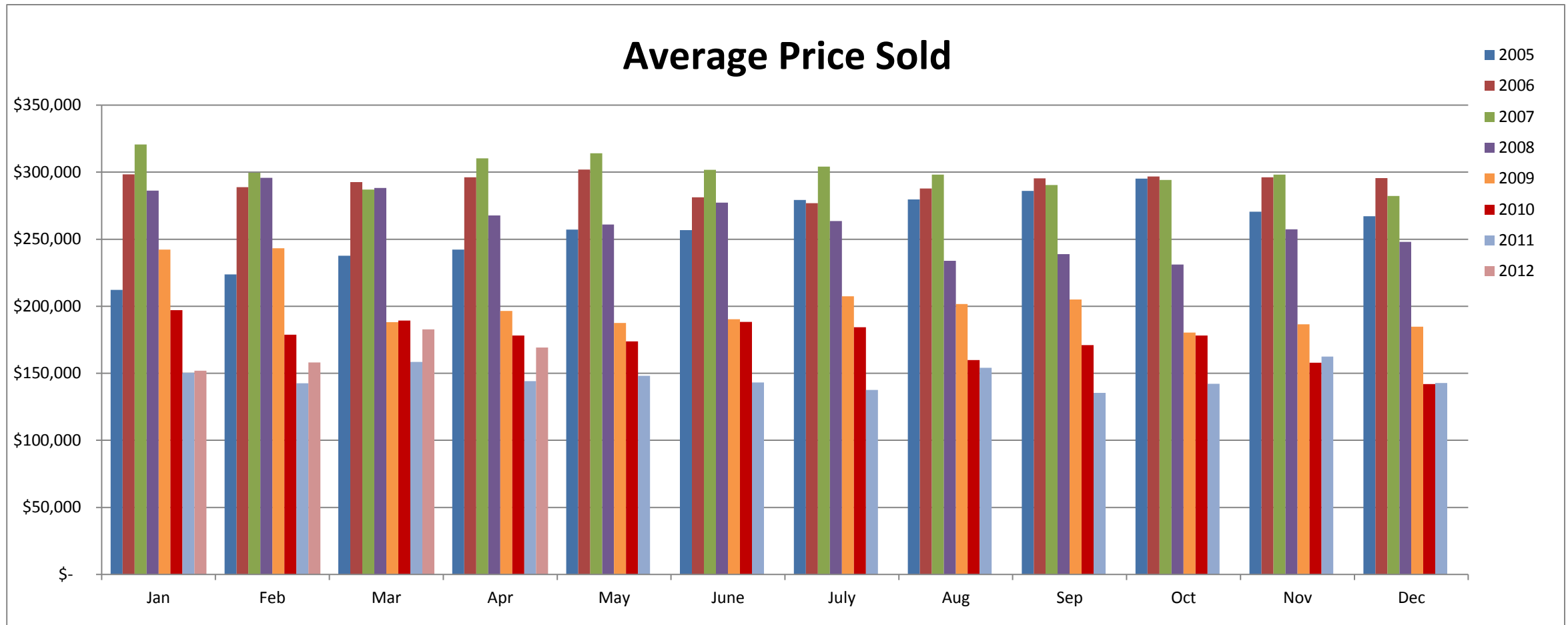
<http://www.TempeForeclosureSearch.com>

Data compiled from the Arizona Regional Multiple Listing Service.

All information provided is deemed reliable but is not guaranteed and should be independently verified.

Tempe, Arizona Residential Sales Statistics

January 2005 - Present



Average Price Sold

	Jan	Feb	Mar	Apr	May	June	July	Aug	Sep	Oct	Nov	Dec	Annual Avg
2005	\$ 212,151	\$ 223,733	\$ 237,620	\$ 242,319	\$ 257,260	\$ 256,771	\$ 279,308	\$ 279,630	\$ 285,949	\$ 295,103	\$ 270,455	\$ 267,155	\$ 258,955
2006	\$ 298,342	\$ 288,848	\$ 292,593	\$ 296,157	\$ 301,854	\$ 281,260	\$ 276,804	\$ 287,799	\$ 295,396	\$ 296,680	\$ 296,096	\$ 295,662	\$ 292,291
2007	\$ 320,549	\$ 299,577	\$ 287,085	\$ 310,268	\$ 314,077	\$ 301,674	\$ 304,163	\$ 298,088	\$ 290,428	\$ 294,097	\$ 298,172	\$ 282,170	\$ 300,029
2008	\$ 286,216	\$ 295,766	\$ 288,220	\$ 267,661	\$ 260,955	\$ 277,345	\$ 263,627	\$ 233,854	\$ 238,790	\$ 231,066	\$ 257,435	\$ 248,092	\$ 262,419
2009	\$ 242,342	\$ 243,336	\$ 188,110	\$ 196,566	\$ 187,523	\$ 190,362	\$ 207,419	\$ 201,754	\$ 205,056	\$ 180,374	\$ 186,567	\$ 184,712	\$ 201,177
2010	\$ 197,044	\$ 178,875	\$ 189,420	\$ 178,193	\$ 173,832	\$ 188,377	\$ 184,417	\$ 159,779	\$ 171,089	\$ 178,250	\$ 157,968	\$ 141,958	\$ 174,934
2011	\$ 150,355	\$ 142,585	\$ 158,454	\$ 144,172	\$ 148,154	\$ 143,168	\$ 137,583	\$ 154,083	\$ 135,373	\$ 142,251	\$ 162,526	\$ 142,809	\$ 146,793
2012	\$ 151,888	\$ 158,097	\$ 182,722	\$ 169,163									\$ 165,468

Check out our Tempe website to Search for Tempe Foreclosed Homes:

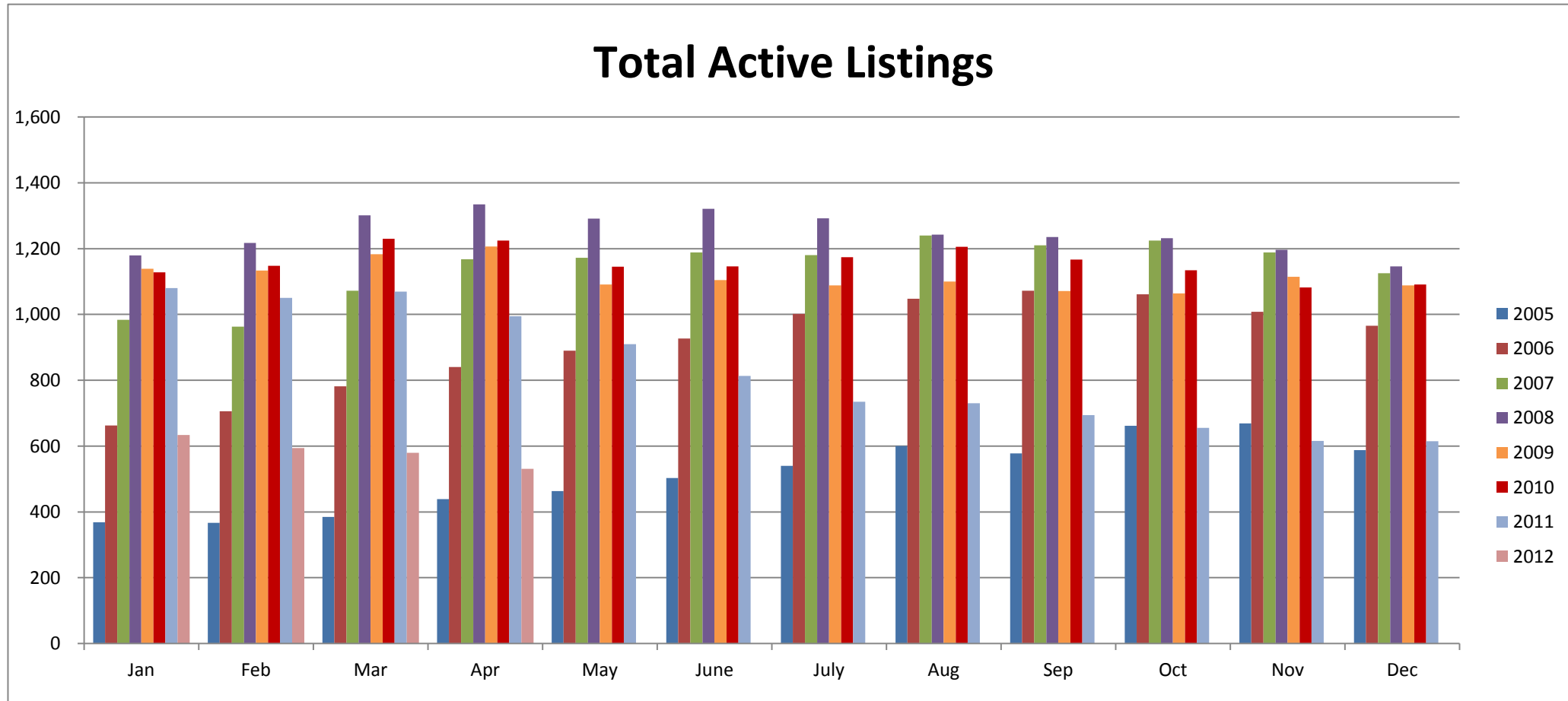
<http://www.TempeForeclosureSearch.com>

Data compiled from the Arizona Regional Multiple Listing Service.

All information provided is deemed reliable but is not guaranteed and should be independently verified.

Tempe, Arizona Residential Sales Statistics

January 2005 - Present



Total Active Listings

	Jan	Feb	Mar	Apr	May	June	July	Aug	Sep	Oct	Nov	Dec	Annual Totals
2005	369	367	385	439	463	503	540	600	578	662	669	588	6,163
2006	663	706	782	840	890	927	1,002	1,048	1,072	1,061	1,008	966	10,965
2007	984	963	1,072	1,168	1,172	1,188	1,180	1,240	1,210	1,224	1,188	1,125	13,714
2008	1,179	1,217	1,301	1,334	1,291	1,321	1,292	1,242	1,235	1,232	1,196	1,146	14,986
2009	1,139	1,133	1,183	1,206	1,091	1,104	1,088	1,100	1,071	1,064	1,114	1,088	13,381
2010	1,128	1,148	1,230	1,224	1,145	1,146	1,174	1,205	1,167	1,134	1,082	1,091	13,874
2011	1,080	1,050	1,069	994	910	813	735	730	694	655	616	615	9,961
2012	634	594	580	531									2,339

Check out our Tempe website to Search for Tempe Foreclosed Homes:

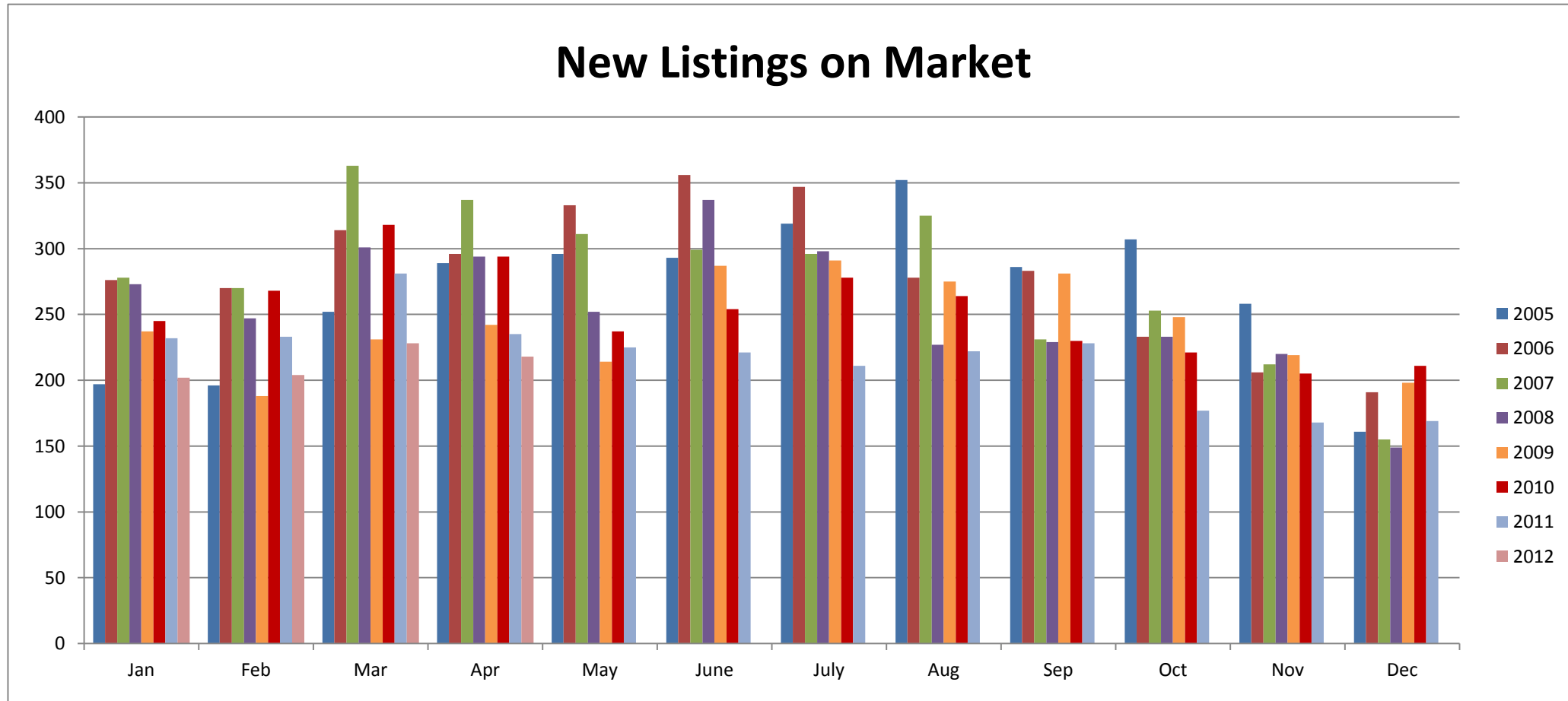
<http://www.TempeForeclosureSearch.com>

Data compiled from the Arizona Regional Multiple Listing Service.

All information provided is deemed reliable but is not guaranteed and should be independently verified.

Tempe, Arizona Residential Sales Statistics

January 2005 - Present



New Listings on Market

	Jan	Feb	Mar	Apr	May	June	July	Aug	Sep	Oct	Nov	Dec	Annual Avg
2005	197	196	252	289	296	293	319	352	286	307	258	161	267
2006	276	270	314	296	333	356	347	278	283	233	206	191	282
2007	278	270	363	337	311	299	296	325	231	253	212	155	278
2008	273	247	301	294	252	337	298	227	229	233	220	149	255
2009	237	188	231	242	214	287	291	275	281	248	219	198	243
2010	245	268	318	294	237	254	278	264	230	221	205	211	252
2011	232	233	281	235	225	221	211	222	228	177	168	169	217
2012	202	204	228	218									213

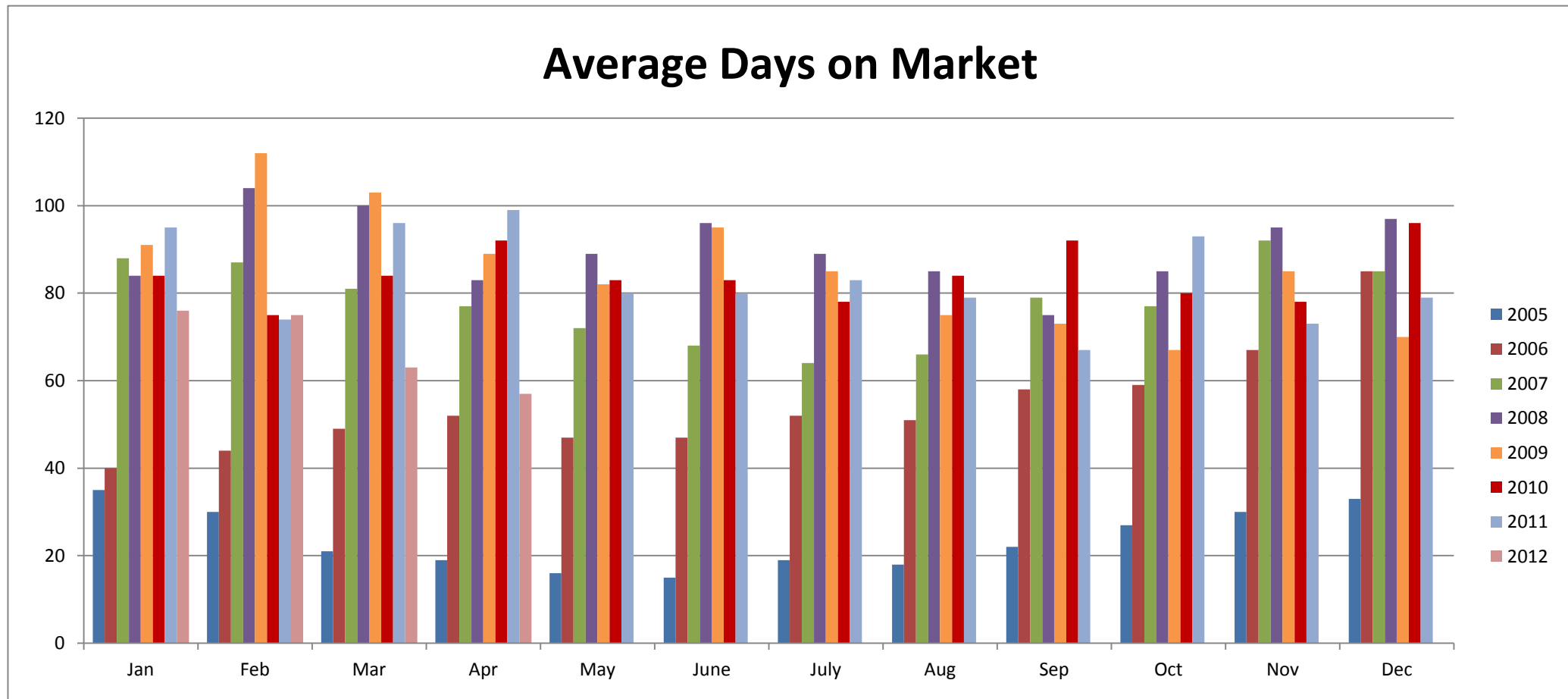
Check out our Tempe website to Search for Tempe Foreclosed Homes:

<http://www.TempeForeclosureSearch.com>

Data compiled from the Arizona Regional Multiple Listing Service.
All information provided is deemed reliable but is not guaranteed and should be independently verified.

Tempe, Arizona Residential Sales Statistics

January 2005 - Present



Average Days on Market

	Jan	Feb	Mar	Apr	May	June	July	Aug	Sep	Oct	Nov	Dec	Annual Avg
2005	35	30	21	19	16	15	19	18	22	27	30	33	24
2006	40	44	49	52	47	47	52	51	58	59	67	85	54
2007	88	87	81	77	72	68	64	66	79	77	92	85	78
2008	84	104	100	83	89	96	89	85	75	85	95	97	90
2009	91	112	103	89	82	95	85	75	73	67	85	70	86
2010	84	75	84	92	83	83	78	84	92	80	78	96	84
2011	95	74	96	99	80	80	83	79	67	93	73	79	83
2012	76	75	63	57									68

Check out our Tempe website to Search for Tempe Foreclosed Homes:

<http://www.TempeForeclosureSearch.com>

Data compiled from the Arizona Regional Multiple Listing Service.
All information provided is deemed reliable but is not guaranteed and should be independently verified.