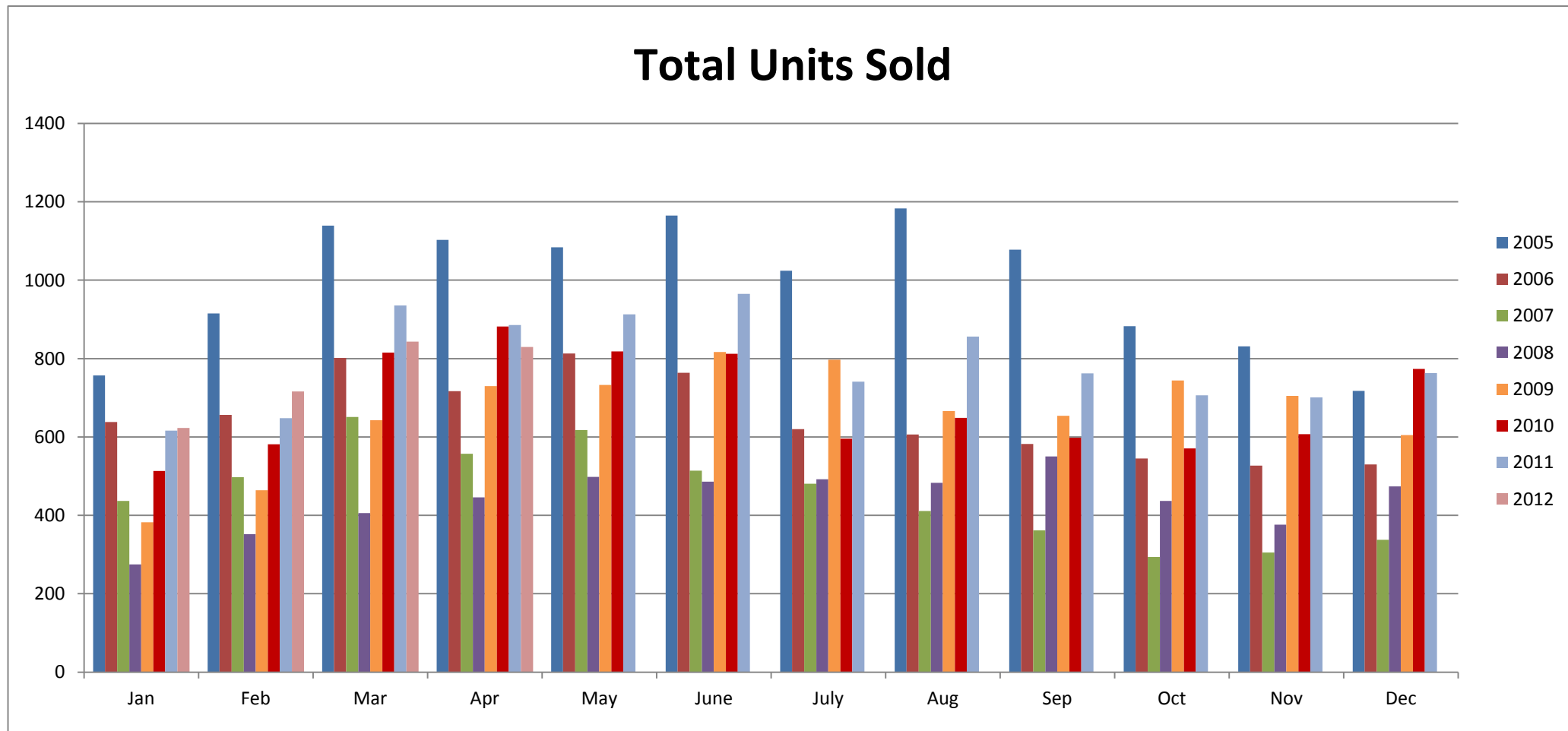


Mesa, Arizona Residential Sales Statistics

January 2005 - Present



Total Units Sold

	Jan	Feb	Mar	Apr	May	June	July	Aug	Sep	Oct	Nov	Dec	Annual Totals
2005	757	915	1139	1103	1084	1165	1024	1183	1078	883	831	718	11,880
2006	638	656	802	717	813	764	620	606	582	545	527	530	7,800
2007	437	497	651	557	618	514	481	411	362	294	305	338	5,465
2008	275	352	406	446	498	486	492	483	550	437	376	474	5,275
2009	382	464	643	730	733	817	797	666	654	744	705	605	7,940
2010	513	581	815	882	818	812	596	649	598	571	607	774	8,216
2011	616	648	936	886	913	965	741	856	762	706	701	763	9,493
2012	623	716	843	830									3,012

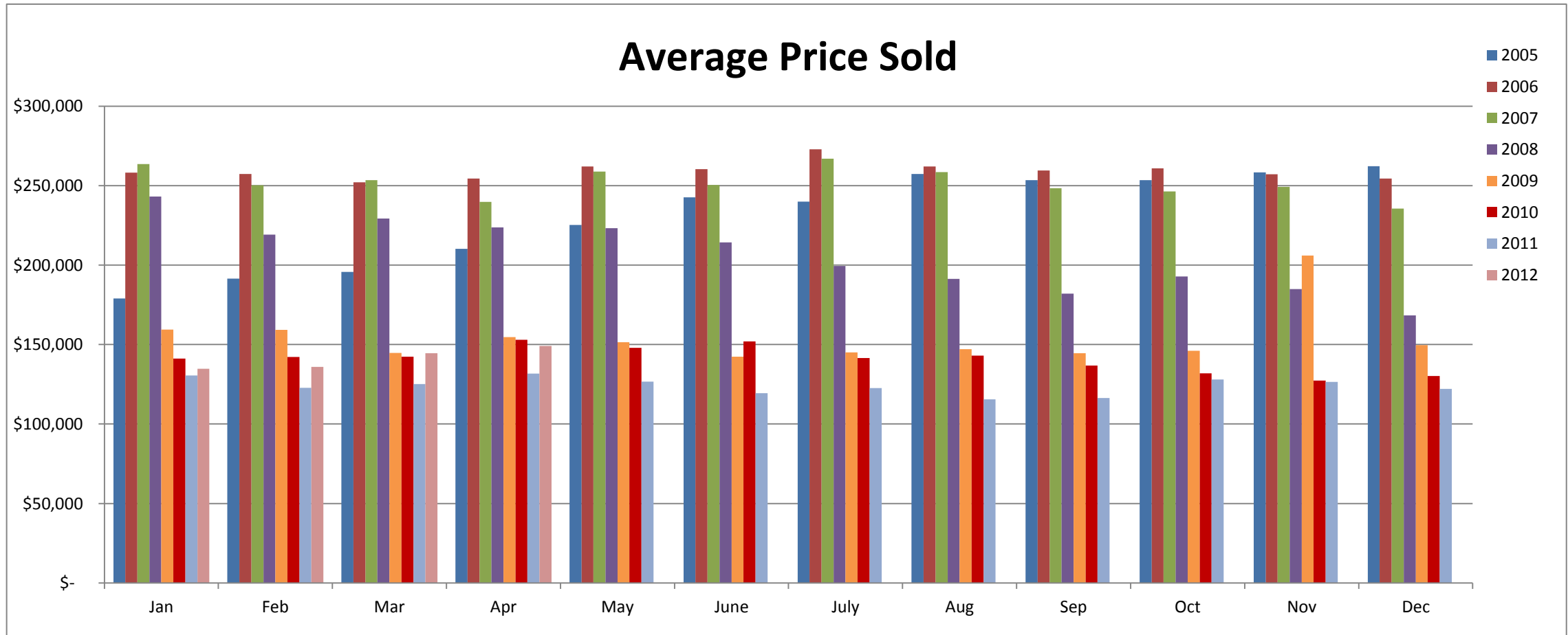
Check out our Mesa website to Search for Mesa Foreclosed Homes:

<http://www.MesaForeclosureSearch.com>

Data compiled from the Arizona Regional Multiple Listing Service.
All information provided is deemed reliable but is not guaranteed and should be independently verified.

Mesa, Arizona Residential Sales Statistics

January 2005 - Present



Average Price Sold

	Jan	Feb	Mar	Apr	May	June	July	Aug	Sep	Oct	Nov	Dec	Annual Avg
2005	\$ 178,941	\$ 191,545	\$ 195,778	\$ 210,289	\$ 225,291	\$ 242,699	\$ 239,881	\$ 257,288	\$ 253,490	\$ 253,411	\$ 258,283	\$ 262,163	\$ 230,755
2006	\$ 258,187	\$ 257,353	\$ 252,126	\$ 254,496	\$ 262,072	\$ 260,378	\$ 272,900	\$ 262,122	\$ 259,442	\$ 260,830	\$ 257,100	\$ 254,519	\$ 259,294
2007	\$ 263,476	\$ 250,281	\$ 253,389	\$ 239,679	\$ 258,781	\$ 250,377	\$ 266,856	\$ 258,419	\$ 248,375	\$ 246,370	\$ 249,287	\$ 235,591	\$ 251,740
2008	\$ 243,104	\$ 219,096	\$ 229,316	\$ 223,652	\$ 223,195	\$ 214,321	\$ 199,485	\$ 191,329	\$ 182,110	\$ 192,789	\$ 184,839	\$ 168,332	\$ 205,964
2009	\$ 159,343	\$ 159,291	\$ 144,776	\$ 154,696	\$ 151,534	\$ 142,397	\$ 145,144	\$ 147,140	\$ 144,473	\$ 146,000	\$ 205,977	\$ 149,629	\$ 154,200
2010	\$ 141,141	\$ 142,179	\$ 142,315	\$ 153,030	\$ 147,857	\$ 152,053	\$ 141,469	\$ 143,083	\$ 136,750	\$ 131,962	\$ 127,287	\$ 130,191	\$ 140,776
2011	\$ 130,590	\$ 122,737	\$ 125,120	\$ 131,732	\$ 126,607	\$ 119,443	\$ 122,565	\$ 115,556	\$ 116,378	\$ 128,073	\$ 126,540	\$ 122,106	\$ 123,954
2012	\$ 134,818	\$ 135,994	\$ 144,528	\$ 149,048									\$ 141,097

Check out our Mesa website to Search for Mesa Foreclosed Homes:

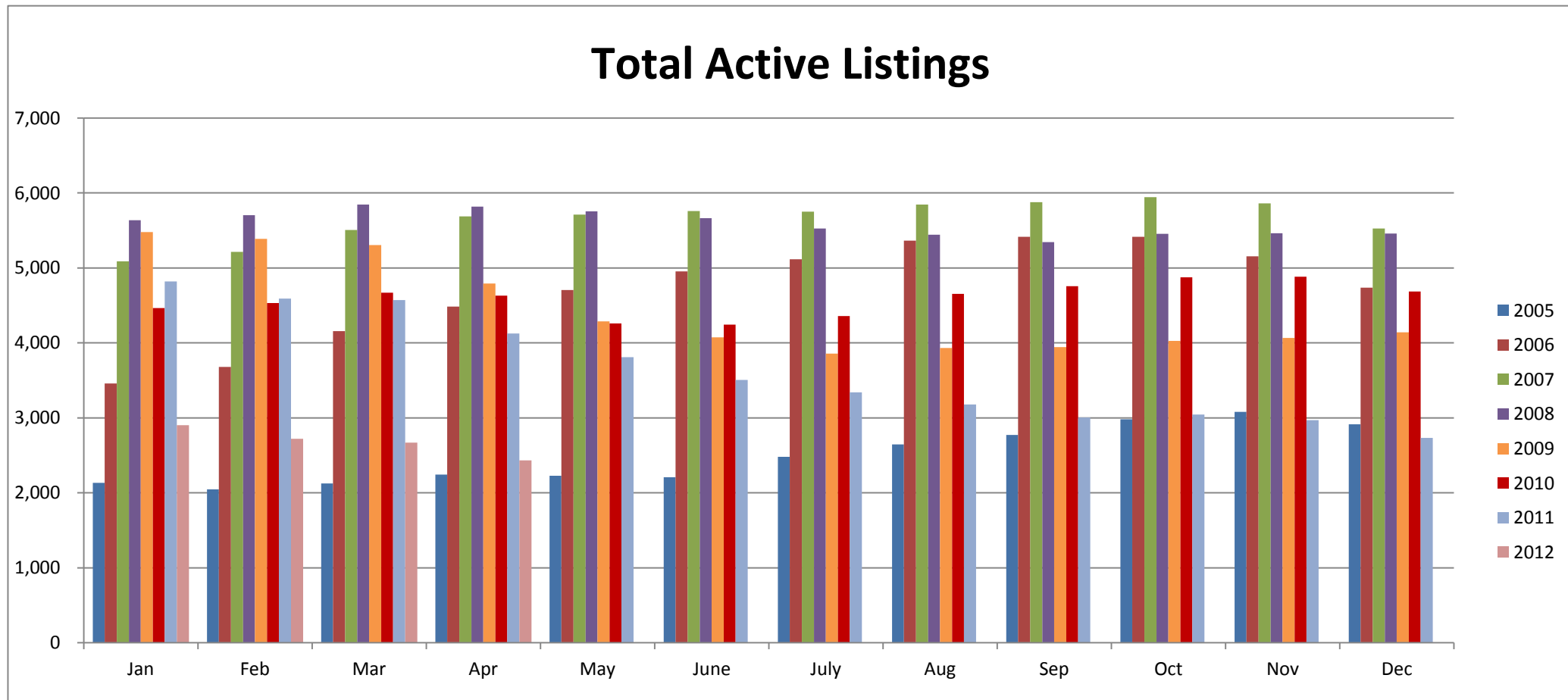
<http://www.MesaForeclosureSearch.com>

Data compiled from the Arizona Regional Multiple Listing Service.

All information provided is deemed reliable but is not guaranteed and should be independently verified.

Mesa, Arizona Residential Sales Statistics

January 2005 - Present



Total Active Listings

	Jan	Feb	Mar	Apr	May	June	July	Aug	Sep	Oct	Nov	Dec	Annual Totals
2005	2,133	2,046	2,124	2,244	2,226	2,210	2,481	2,648	2,773	2,982	3,081	2,913	29,861
2006	3,457	3,679	4,159	4,485	4,705	4,955	5,117	5,365	5,416	5,417	5,154	4,739	56,648
2007	5,087	5,215	5,507	5,687	5,713	5,759	5,752	5,846	5,879	5,946	5,860	5,526	67,777
2008	5,635	5,704	5,846	5,819	5,754	5,665	5,526	5,445	5,344	5,455	5,462	5,458	67,113
2009	5,477	5,389	5,307	4,793	4,286	4,073	3,858	3,933	3,946	4,026	4,065	4,142	53,295
2010	4,465	4,531	4,672	4,630	4,260	4,243	4,359	4,654	4,757	4,877	4,885	4,686	55,019
2011	4,820	4,591	4,571	4,125	3,809	3,506	3,340	3,177	3,004	3,044	2,968	2,732	43,687
2012	2,904	2,723	2,671	2,434									10,732

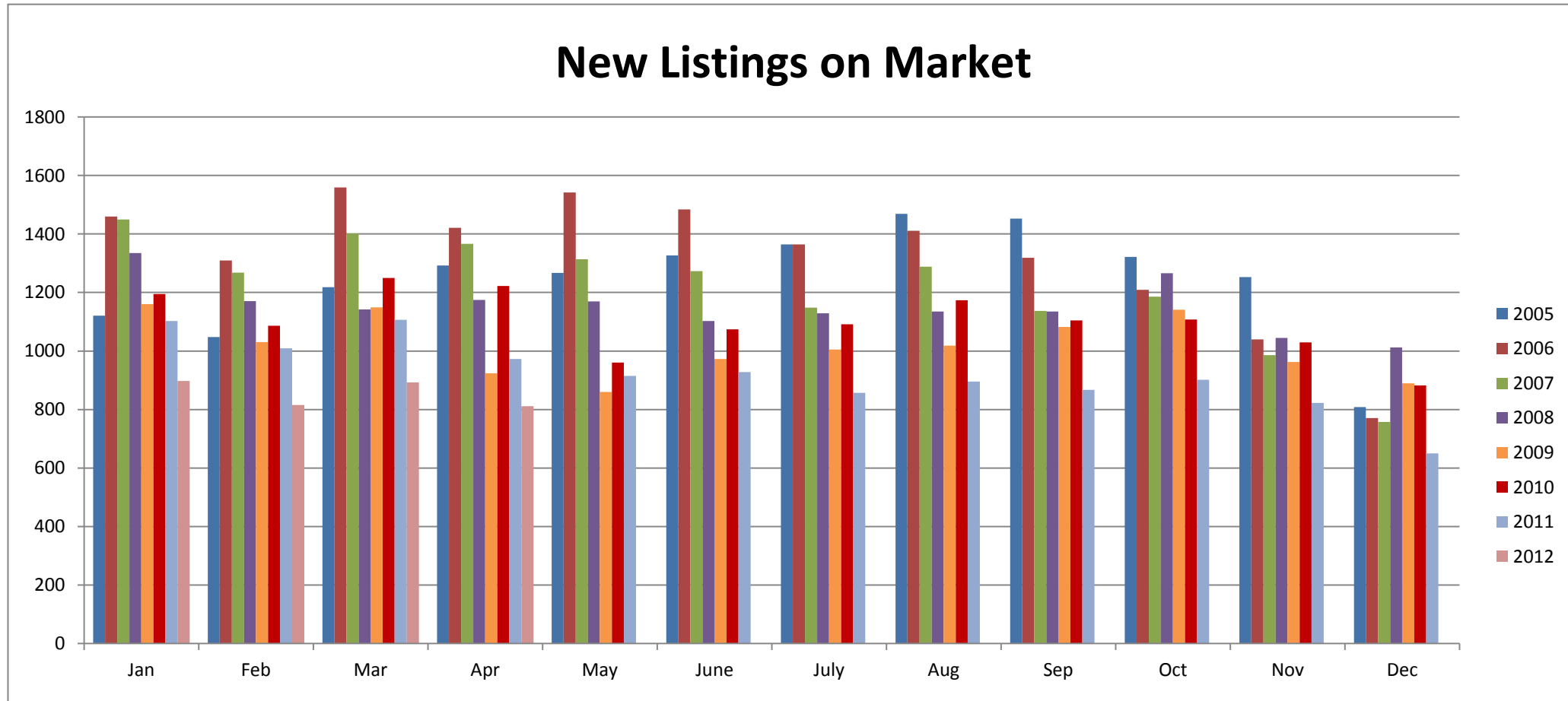
Check out our Mesa website to Search for Mesa Foreclosed Homes:

<http://www.MesaForeclosureSearch.com>

Data compiled from the Arizona Regional Multiple Listing Service.
All information provided is deemed reliable but is not guaranteed and should be independently verified.

Mesa, Arizona Residential Sales Statistics

January 2005 - Present



New Listings on Market

	Jan	Feb	Mar	Apr	May	June	July	Aug	Sep	Oct	Nov	Dec	Annual Avg
2005	1121	1048	1218	1292	1267	1327	1364	1469	1453	1322	1253	808	1,245
2006	1460	1309	1559	1421	1542	1484	1364	1411	1319	1209	1040	771	1,324
2007	1449	1268	1402	1366	1314	1273	1148	1288	1137	1186	986	758	1,215
2008	1335	1170	1142	1175	1169	1102	1129	1135	1135	1266	1045	1012	1,151
2009	1160	1030	1149	924	860	973	1005	1018	1082	1141	962	889	1,016
2010	1195	1086	1250	1222	960	1074	1091	1173	1105	1108	1029	882	1,098
2011	1102	1009	1107	973	915	928	857	896	867	902	822	650	919
2012	898	815	892	811									854

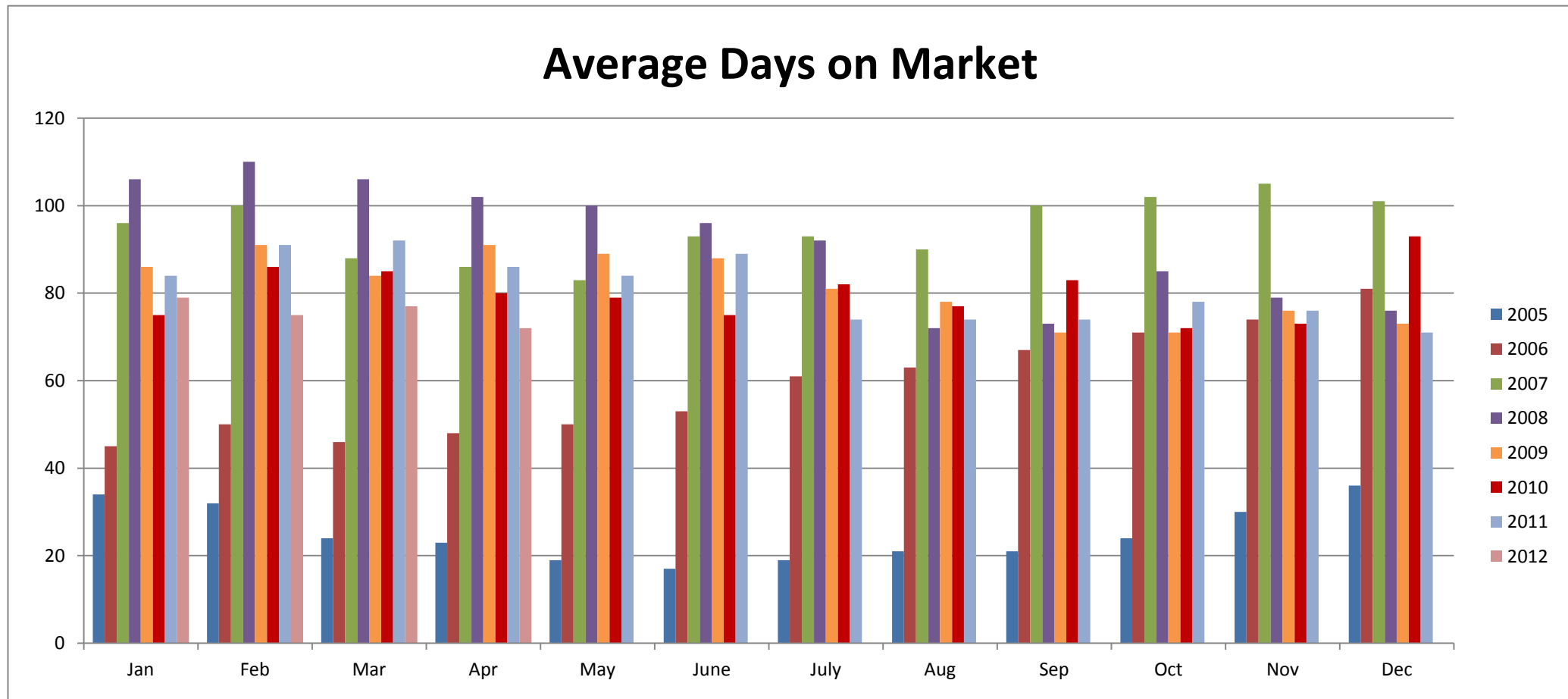
Check out our Mesa website to Search for Mesa Foreclosed Homes:

<http://www.MesaForeclosureSearch.com>

Data compiled from the Arizona Regional Multiple Listing Service.
All information provided is deemed reliable but is not guaranteed and should be independently verified.

Mesa, Arizona Residential Sales Statistics

January 2005 - Present



Average Days on Market

	Jan	Feb	Mar	Apr	May	June	July	Aug	Sep	Oct	Nov	Dec	Annual Avg
2005	34	32	24	23	19	17	19	21	21	24	30	36	25
2006	45	50	46	48	50	53	61	63	67	71	74	81	59
2007	96	100	88	86	83	93	93	90	100	102	105	101	95
2008	106	110	106	102	100	96	92	72	73	85	79	76	91
2009	86	91	84	91	89	88	81	78	71	71	76	73	82
2010	75	86	85	80	79	75	82	77	83	72	73	93	80
2011	84	91	92	86	84	89	74	74	74	78	76	71	81
2012	79	75	77	72									76

Check out our Mesa website to Search for Mesa Foreclosed Homes:

<http://www.MesaForeclosureSearch.com>

Data compiled from the Arizona Regional Multiple Listing Service.
All information provided is deemed reliable but is not guaranteed and should be independently verified.