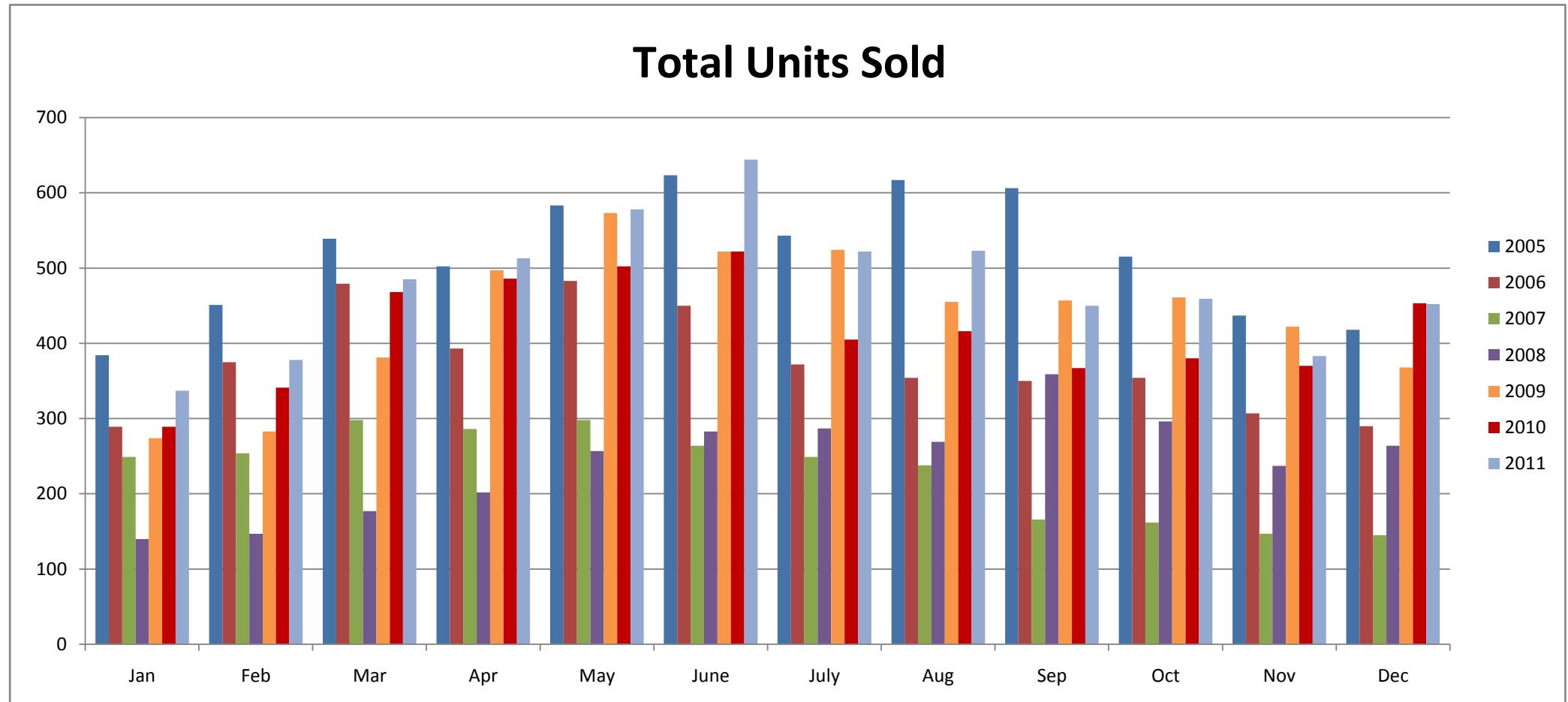


Glendale, Arizona Residential Sales Statistics

January 2005 - Present



Total Units Sold

	Jan	Feb	Mar	Apr	May	June	July	Aug	Sep	Oct	Nov	Dec	Annual Totals
2005	384	451	539	502	583	623	543	617	606	515	437	418	6,218
2006	289	375	479	393	483	450	372	354	350	354	307	290	4,496
2007	249	254	298	286	298	264	249	238	166	162	147	145	2,756
2008	140	147	177	202	257	283	287	269	359	296	237	264	2,918
2009	274	283	381	497	573	522	524	455	457	461	422	368	5,217
2010	289	341	468	486	502	522	405	416	367	380	370	453	4,999
2011	337	378	485	513	578	644	522	523	450	459	383	452	5,724

Check out our **Glendale website to Search for Glendale Foreclosed Homes:**

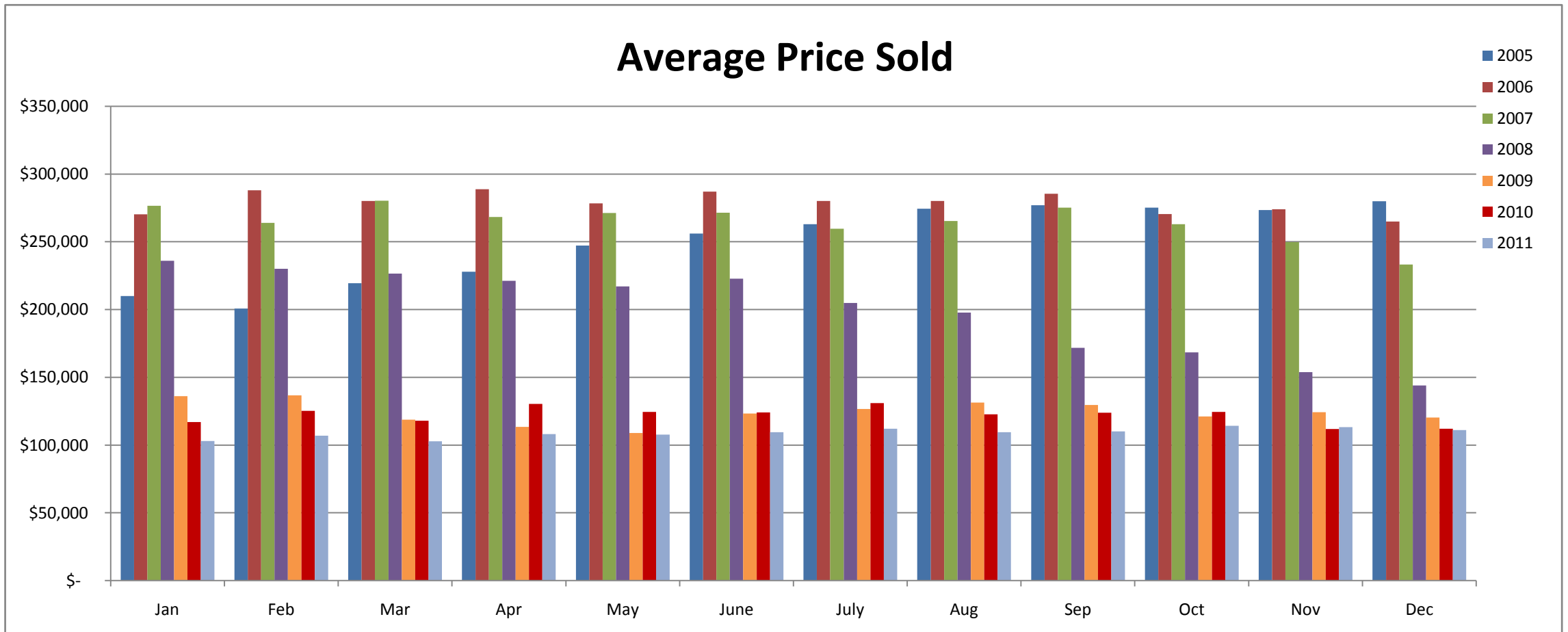
<http://www.GlendaleForeclosedHomes.com>

Data compiled from the Arizona Regional Multiple Listing Service.

All information provided is deemed reliable but is not guaranteed and should be independently verified.

Glendale, Arizona Residential Sales Statistics

January 2005 - Present



Average Price Sold

	Jan	Feb	Mar	Apr	May	June	July	Aug	Sep	Oct	Nov	Dec	Annual Avg
2005	\$ 209,988	\$ 200,841	\$ 219,613	\$ 228,018	\$ 247,321	\$ 256,208	\$ 263,028	\$ 274,428	\$ 277,022	\$ 275,305	\$ 273,539	\$ 280,073	\$ 250,449
2006	\$ 270,293	\$ 288,077	\$ 280,177	\$ 288,909	\$ 278,393	\$ 287,118	\$ 280,311	\$ 280,276	\$ 285,554	\$ 270,521	\$ 274,216	\$ 265,085	\$ 279,078
2007	\$ 276,689	\$ 264,142	\$ 280,395	\$ 268,334	\$ 271,352	\$ 271,645	\$ 259,708	\$ 265,464	\$ 275,217	\$ 263,100	\$ 249,889	\$ 233,265	\$ 264,933
2008	\$ 236,053	\$ 230,119	\$ 226,703	\$ 221,246	\$ 217,087	\$ 222,871	\$ 204,979	\$ 197,772	\$ 171,817	\$ 168,426	\$ 153,852	\$ 144,028	\$ 199,579
2009	\$ 136,144	\$ 136,864	\$ 118,763	\$ 113,475	\$ 108,961	\$ 123,361	\$ 126,747	\$ 131,426	\$ 129,584	\$ 121,205	\$ 124,442	\$ 120,398	\$ 124,281
2010	\$ 117,119	\$ 125,243	\$ 118,097	\$ 130,535	\$ 124,580	\$ 124,240	\$ 131,069	\$ 122,733	\$ 124,010	\$ 124,542	\$ 111,872	\$ 112,081	\$ 122,177
2011	\$ 103,099	\$ 107,036	\$ 102,783	\$ 108,135	\$ 107,712	\$ 109,558	\$ 112,103	\$ 109,584	\$ 110,068	\$ 114,289	\$ 113,232	\$ 111,197	\$ 109,066

Check out our Glendale website to Search for Glendale Foreclosed Homes:

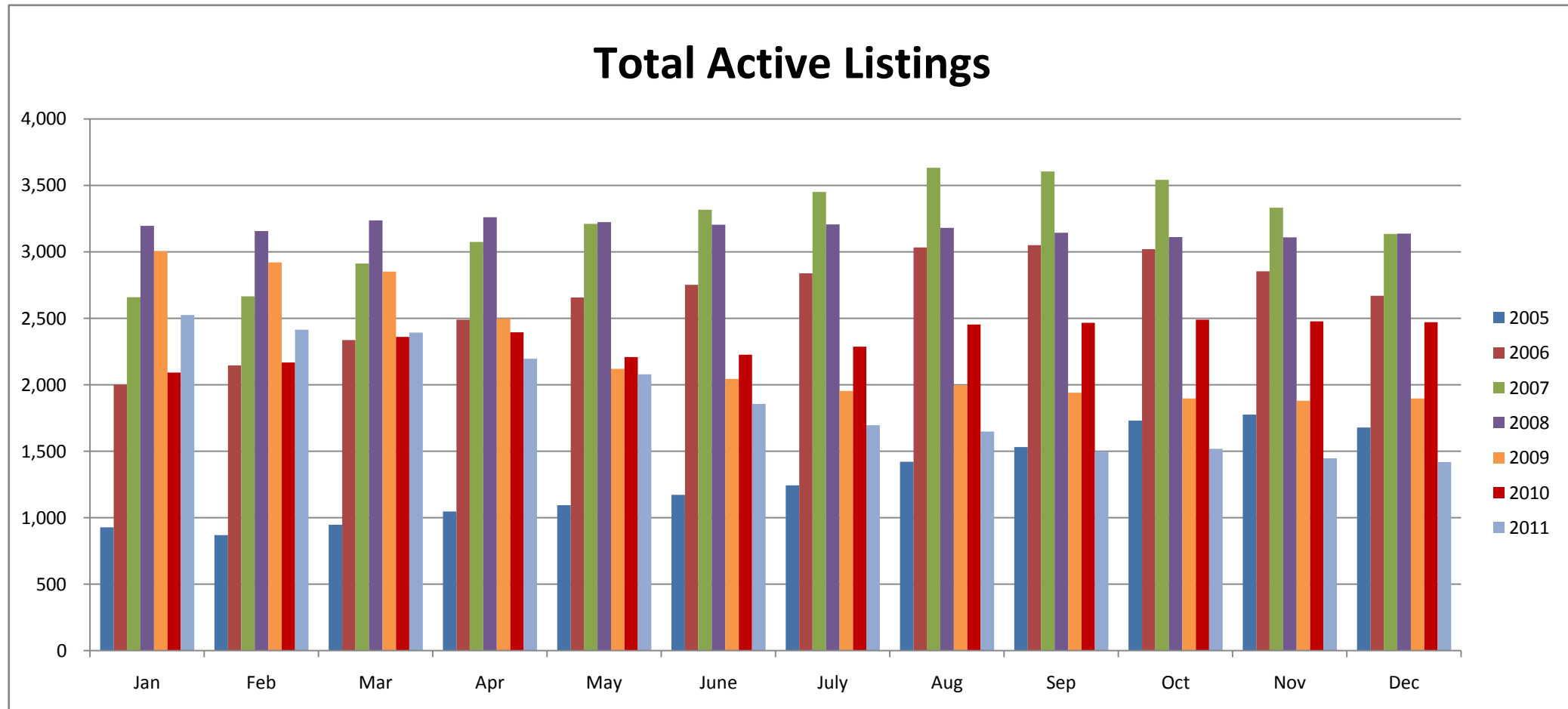
<http://www.GlendaleForeclosedHomes.com>

Data compiled from the Arizona Regional Multiple Listing Service.

All information provided is deemed reliable but is not guaranteed and should be independently verified.

Glendale, Arizona Residential Sales Statistics

January 2005 - Present



Total Active Listings

	Jan	Feb	Mar	Apr	May	June	July	Aug	Sep	Oct	Nov	Dec	Annual Totals
2005	928	869	948	1,047	1,094	1,173	1,243	1,421	1,531	1,730	1,777	1,678	15,439
2006	2,001	2,147	2,337	2,489	2,657	2,751	2,839	3,034	3,050	3,021	2,853	2,670	31,849
2007	2,659	2,666	2,912	3,074	3,211	3,316	3,451	3,633	3,605	3,542	3,331	3,134	38,534
2008	3,196	3,157	3,237	3,261	3,224	3,203	3,206	3,180	3,144	3,110	3,108	3,137	38,163
2009	3,004	2,920	2,852	2,499	2,121	2,044	1,953	1,997	1,941	1,898	1,880	1,898	27,007
2010	2,092	2,167	2,361	2,394	2,208	2,226	2,286	2,453	2,466	2,489	2,478	2,470	28,090
2011	2,524	2,414	2,393	2,195	2,078	1,857	1,696	1,648	1,497	1,519	1,448	1,420	22,689

Check out our Glendale website to Search for Glendale Foreclosed Homes:

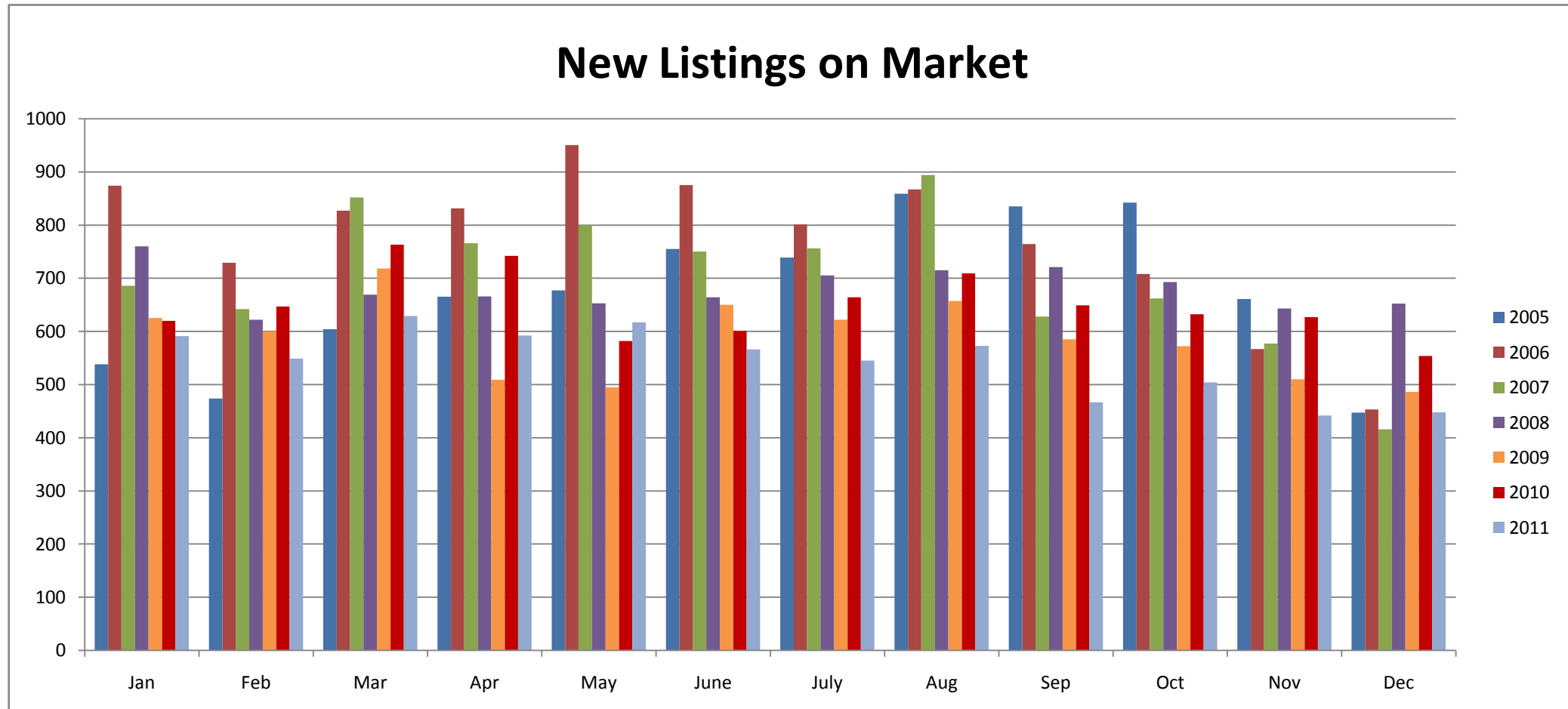
<http://www.GlendaleForeclosedHomes.com>

Data compiled from the Arizona Regional Multiple Listing Service.

All information provided is deemed reliable but is not guaranteed and should be independently verified.

Glendale, Arizona Residential Sales Statistics

January 2005 - Present



New Listings on Market

	Jan	Feb	Mar	Apr	May	June	July	Aug	Sep	Oct	Nov	Dec	Annual Avg
2005	538	474	604	665	677	755	739	859	835	842	661	447	675
2006	874	729	827	831	950	875	801	867	764	708	567	453	771
2007	686	642	852	766	800	750	756	894	628	662	577	416	702
2008	760	622	669	666	653	664	705	715	721	693	643	652	680
2009	625	600	718	509	495	650	622	657	585	572	510	486	586
2010	620	647	763	742	582	601	664	709	649	632	627	554	649
2011	591	549	629	592	617	566	545	573	467	504	442	448	544

Check out our Glendale website to Search for Glendale Foreclosed Homes:

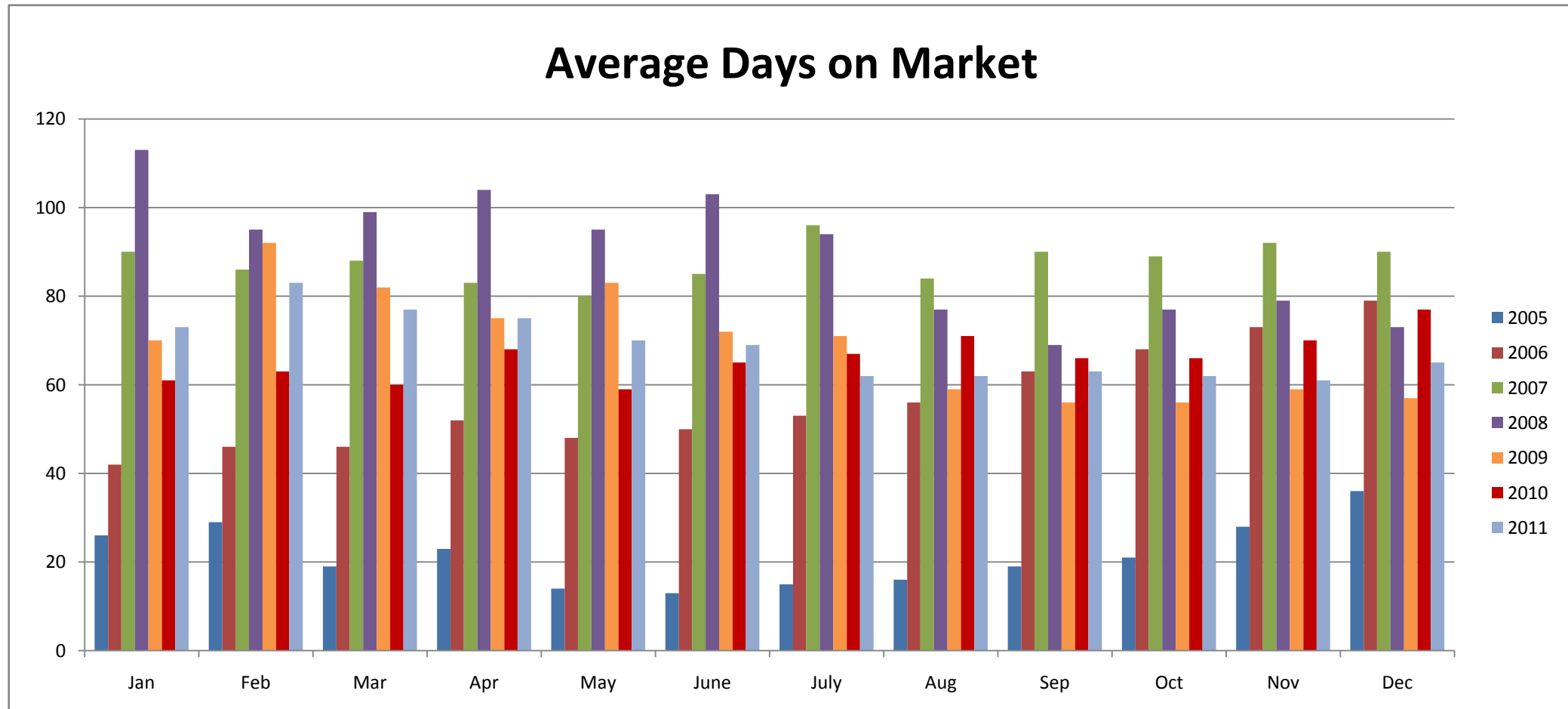
<http://www.GlendaleForeclosedHomes.com>

Data compiled from the Arizona Regional Multiple Listing Service.

All information provided is deemed reliable but is not guaranteed and should be independently verified.

Glendale, Arizona Residential Sales Statistics

January 2005 - Present



Average Days on Market

	Jan	Feb	Mar	Apr	May	June	July	Aug	Sep	Oct	Nov	Dec	Annual Avg
2005	26	29	19	23	14	13	15	16	19	21	28	36	22
2006	42	46	46	52	48	50	53	56	63	68	73	79	56
2007	90	86	88	83	80	85	96	84	90	89	92	90	88
2008	113	95	99	104	95	103	94	77	69	77	79	73	90
2009	70	92	82	75	83	72	71	59	56	56	59	57	69
2010	61	63	60	68	59	65	67	71	66	66	70	77	66
2011	73	83	77	75	70	69	62	62	63	62	61	65	69

Check out our Glendale website to Search for Glendale Foreclosed Homes:

<http://www.GlendaleForeclosedHomes.com>

Data compiled from the Arizona Regional Multiple Listing Service.
All information provided is deemed reliable but is not guaranteed and should be independently verified.